

## Use and Effectiveness of Neoadjuvant Chemotherapy for Treatment of Ovarian Cancer

Larissa A. Meyer, Angel M. Cronin, Charlotte C. Sun, Kristin Bixel, Michael A. Bookman, Mihaela C. Cristea, Jennifer J. Griggs, Charles F. Levenback, Robert A. Burger, Gina Mantia-Smaldone, Ursula A. Matulonis, Joyce C. Niland, David M. O'Malley, and Alexi A. Wright

See accompanying editorial on page 3827

### A B S T R A C T

#### Purpose

In 2010, a randomized clinical trial demonstrated noninferior survival for patients with advanced ovarian cancer who were treated with neoadjuvant chemotherapy (NACT) compared with primary cytoreductive surgery (PCS). We examined the use and effectiveness of NACT in clinical practice.

#### Patients and Methods

A multi-institutional observational study of 1,538 women with stages IIIC to IV ovarian cancer who were treated at six National Cancer Institute–designated cancer centers. We examined NACT use in patients who were diagnosed between 2003 and 2012 (N = 1,538) and compared overall survival (OS), morbidity, and postoperative residual disease in a propensity-score matched sample of patients (N = 594).

#### Results

NACT use increased from 16% during 2003 to 2010 to 34% during 2011 to 2012 in stage IIIC disease ( $P_{\text{trend}} < .001$ ), and from 41% to 62% in stage IV disease ( $P_{\text{trend}} < .001$ ). Adoption of NACT varied by institution, from 8% to 30% for stage IIIC disease ( $P < .001$ ) and from 27% to 61% ( $P = .007$ ) for stage IV disease during this time period. In the matched sample, NACT was associated with shorter OS in stage IIIC disease (median OS: 33 v 43 months; hazard ratio [HR], 1.40; 95% CI, 1.11 to 1.77) compared with PCS, but not stage IV disease (median OS: 31 v 36 months; HR, 1.16; 95% CI, 0.89 to 1.52). Patients with stages IIIC and IV disease who received NACT were less likely to have  $\geq 1$  cm postoperative residual disease, an intensive care unit admission, or a rehospitalization (all  $P \leq .04$ ) compared with those who received PCS treatment. However, among women with stage IIIC disease who achieved microscopic or  $\leq 1$  cm postoperative residual disease, NACT was associated with decreased OS (HR, 1.49; 95% CI, 1.01 to 2.18;  $P = .04$ ).

#### Conclusion

Use of NACT increased significantly between 2003 and 2012. In this observational study, PCS was associated with increased survival in stage IIIC, but not stage IV disease. Future studies should prospectively consider the efficacy of NACT by extent of residual disease in unselected patients.

*J Clin Oncol* 34:3854-3863. © 2016 by American Society of Clinical Oncology

### INTRODUCTION

Optimal treatment of advanced ovarian cancer includes both surgical cytoreduction and platinum-based chemotherapy. In 2010, a randomized clinical trial (RCT) demonstrated that women with stages IIIC and IV ovarian cancer who received neoadjuvant chemotherapy (NACT) had noninferior progression-free survival (PFS) and overall survival (OS) and less treatment-related morbidity and mortality compared with those who received primary cytoreductive surgery (PCS).<sup>1</sup> More recently,

another RCT reported that NACT was noninferior to PCS.<sup>2</sup> Both trials have been criticized because the median overall survival, mean operative times, and rates of optimal cytoreduction were significantly lower than expected.

To date, few studies have examined the impact that these trials have had on the use of NACT in clinical practice, particularly in the United States, where the choice between PCS and NACT remains highly controversial. Two meta-analyses examined outcomes of NACT, but reported opposing findings.<sup>3,4</sup>

In this study, we examined the use of NACT between 2003 and 2012 at six comprehensive cancer

Larissa A. Meyer, Charlotte C. Sun, and Charles F. Levenback, The University of Texas MD Anderson Cancer Center, Houston, TX; Angel M. Cronin, Ursula A. Matulonis, and Alexi A. Wright, Dana-Farber/Brigham and Women's Cancer Center, Boston, MA; Kristin Bixel and David M. O'Malley, The Ohio State University Comprehensive Cancer Center, Columbus, OH; Michael A. Bookman, US Oncology Research and Arizona Oncology, Tucson, AZ; Mihaela C. Cristea and Joyce C. Niland, City of Hope Comprehensive Cancer Center, Duarte, CA; Jennifer J. Griggs, University of Michigan Comprehensive Cancer Center, Ann Arbor, MI; Robert A. Burger, University of Pennsylvania; and Gina Mantia-Smaldone, Fox Chase Cancer Center, Philadelphia, PA.

Published online ahead of print at [www.jco.org](http://www.jco.org) on September 6, 2016.

Supported by National Cancer Institute Grants No. K07 CA166210 (A.A.W.) and K07 CA201013 (L.A.M.) and Cancer Prevention and Research Institute of Texas Grant No. RP140020 (L.A.M.).

Presented in part at the 2015 Annual Meeting of the American Society of Clinical Oncology, Chicago, IL, May 29–June 2, 2015.

Authors' disclosures of potential conflicts of interest are found in the article online at [www.jco.org](http://www.jco.org). Author contributions are found at the end of this article.

The funding organizations had no role in the preparation, review, or approval of the manuscript. A.A.W. and A.M.C. had full access to all of the data in the study and take responsibility for the integrity of the data and the accuracy of the data analysis.

Corresponding author: Larissa A. Meyer, MD, The University of Texas MD Anderson Cancer Center, 1155 Herman Pressler, Unit 1362, Houston, TX 77030-1362; e-mail: [lmeyer@mdanderson.org](mailto:lmeyer@mdanderson.org).

© 2016 by American Society of Clinical Oncology

0732-183X/16/3432w-3854w/\$20.00

DOI: 10.1200/JCO.2016.68.1239

centers as well as outcomes associated with NACT, including: OS, treatment-related morbidity, and surgical outcomes, including postoperative residual disease. We hypothesized that use of NACT would increase significantly after publication of the first RCT and would be associated with decreased perioperative morbidity compared with PCS. We further hypothesized that women who received NACT and interval cytoreductive surgery (ICS) would be more likely to have microscopic or  $\leq 1$  cm disease postoperatively compared with PCS, but would experience comparable OS.

## MATERIALS AND METHODS

### Data Source

The National Comprehensive Cancer Center Network (NCCN) Ovarian Cancer Outcomes Database Project was created in 2005. Between October 2005 and June 2012, data were prospectively collected on all patients who were diagnosed with ovarian, fallopian, or primary peritoneal cancers at six institutions: City of Hope Comprehensive Cancer Center, Dana-Farber/Brigham and Women's Cancer Center, Fox Chase Cancer Center, Ohio State University Comprehensive Cancer Center, The University of Texas MD Anderson Cancer Center, and the University of Michigan Comprehensive Cancer Center. Data from October 2003 and September 2005 were abstracted retrospectively. Patients seen for one consultation were excluded.

Data on patient and disease characteristics, surgical procedures, postoperative residual disease, chemotherapy, and vital status were abstracted from medical records from diagnosis to death for all patients receiving ongoing care at participating centers. Vital status was confirmed in the National Death Index and medical records abstraction. The institutional review board at each center approved the overall project, and the Dana-Farber/Harvard Cancer Center's Office for Human Research Studies deemed this study exempt from review.

### Study Cohorts

We identified all patients who were diagnosed with stages IIIC and IV ovarian cancer between 2003 and 2012 who received NACT or PCS at an NCCN center. Patients were assigned to a treatment arm (NACT or PCS) on the basis of whether they first received chemotherapy or surgery. In cohort 1, we examined NACT use over time among 1,538 patients diagnosed between 2003 and 2012 and treated within 12 weeks of diagnosis. In cohort 2, we examined factors and outcomes associated with NACT versus PCS within a subset of 1,158 patients from cohort 1, excluding patients who received intraperitoneal and intravenous (IP/IV) chemotherapy—as few patients treated with NACT receive IP/IV chemotherapy, and it is associated with an independent survival benefit<sup>5,6</sup>—and clinical trial participants to minimize selection bias.<sup>7</sup> The flow diagram is displayed in Appendix Figure A1 (online only).

### Outcomes

Our primary outcomes of interest were the proportion of patients who received NACT over time and OS. Survival time started at the first dose of NACT or date of PCS. Patient deaths were abstracted through May 20, 2016; patients alive after this date were censored. Secondary outcomes included treatment-related morbidity and surgical outcomes, that is, residual disease, aggressiveness of surgery, and surgical complexity score.<sup>8</sup>

### Independent Variables

The primary independent variable of interest for the analysis examining NACT use over time was year of diagnosis. For outcomes analysis, the primary predictor was NACT or PCS. Covariates obtained from the medical record included age at diagnosis, race/ethnicity, pretreatment body mass index, insurance, income, Gynecologic Oncology Group performance

status, Charlson comorbidity score,<sup>9</sup> primary disease site, histology, grade, baseline cancer antigen 125 (CA-125), presence of ascites, and NCCN institution.

### Analyses

All analyses were conducted separately by stage. In cohort 1, we tested for changes in the proportion of patients receiving NACT over time by using the Cochran-Armitage test for trend. In cohort 2, we used multivariable logistic regression to investigate factors associated with NACT, including all independent variables of interest regardless of statistical significance, except for insurance as a result of its collinearity with age; outcomes analyses were conducted in propensity-score matched cohorts to balance covariates that might confound the effect of treatment approach on survival.<sup>10-12</sup> Patients who received NACT were matched to patients who received PCS by nearest neighbor matching using a caliper of 0.2 of the pooled standard deviation of the log odds of the propensity score, which was calculated by using all variables in Table 1.

Within the propensity-score matched cohort, survival curves were estimated by using Kaplan-Meier methods. A Cox proportional hazards regression model was used to examine associations between primary treatment (NACT v PCS) and OS, with a robust variance estimator to correct for clustering within matched pairs. Conditional logistic regression for matched groups was used to assess associations between primary treatment and treatment-related morbidity and surgical outcomes. To confirm that this analysis was not impacted by immortal time bias, which we thought would be minimal because both groups received some form of treatment within 12 weeks after diagnosis, we repeated the survival analysis for matched pairs who survived to a landmark time of 3 months after diagnosis.

Although we adjusted for a large number of observed patient and disease characteristics by using propensity score analyses, these methods cannot adjust for unmeasured confounders. Therefore, we tested the sensitivity of associations between treatment group and OS to an unmeasured confounder: high disease burden. By using data from the GOG-182 study to estimate the effect of preoperative disease burden on OS, we estimated that women with high preoperative disease burden have a hazard ratio (HR) of death of 1.56 compared with women with a moderate or low disease burden.<sup>13</sup> We instituted a range of assumptions about the prevalence of high disease burden, which is likely to be more prevalent in women who receive NACT.

We performed several sensitivity analyses. First, we repeated all analyses after including women who received IP/IV chemotherapy ( $n = 34$ ). Second, we limited the survival analysis to matched pairs with patients treated with NACT who received ICS to exclude patients who may have received chemotherapy with strictly palliative intent. Third, we examined associations between treatment and OS within the subgroup of patients with stage IIIC disease and either R0 resection or  $\leq 1$  cm of residual disease. For each of these analyses, we refit the propensity score model by using the variables described above. Finally, we excluded institutions from the survival model one by one to ensure that the results were not explained by observations at a single institution.

Statistical tests were two sided and differences were considered statistically significant at  $P < .05$ . All statistical analysis was performed by using Stata software (version 13.1; Stata, College Station, TX; Computing Resource Center, Santa Monica, CA).

## RESULTS

### Use of NACT Over Time

Overall, 206 (19%) of 1,066 patients with stage IIIC disease and 210 (44%) of 472 patients with stage IV ovarian cancer received NACT between 2003 and 2012. Figure 1 shows the use of NACT versus PCS with and without IP/IV chemotherapy over time

**Table 1.** Characteristics of Patients With Stages IIIC and IV Ovarian Cancer Who Received NACT Versus PCS at National Comprehensive Cancer Network Centers, Excluding Clinical Trial Participants (2003-2012)

Characteristic	Stage IIIC						Stage IV					
	Unadjusted			Adjusted			Unadjusted			Adjusted		
	Overall No. (%)	% NACT	P	Odds Ratio	95% CI	P	Overall No. (%)	% NACT	P	Odds Ratio	95% CI	P
Overall	762 (100)	25	.001*			.001*	396 (100)	46	.006*			.02*
Age, years												
18-54	179 (23)	17		1.00			90 (23)	36		1.00		
55-64	225 (30)	20		1.00	0.56 to 1.76		114 (29)	45		1.55	0.78 to 3.09	
65-74	220 (29)	30		1.68	0.97 to 2.91		133 (34)	51		2.10	1.08 to 4.09	
> 74	138 (18)	33		2.25	1.21 to 4.16		59 (15)	56		2.64	1.14 to 6.10	
Race			.83			.37			.15			.18
White	690 (91)	25		1.00			352 (89)	48		1.00		
Non-white	72 (9)	24		0.74	0.39 to 1.42		44 (11)	36		0.58	0.27 to 1.27	
Ethnicity			.37			.51			.97			.39
Non-Hispanic	723 (95)	24		1.00			370 (93)	46		1.00		
Hispanic	39 (5)	31		1.33	0.57 to 3.07		26 (7)	46		0.61	0.19 to 1.92	
BMI			.04			.20			.06			.93
< 18.5	20 (3)	20		1.00			3 (1)	67				
18.5-25	271 (36)	24		1.00			114 (29)	46		1.00		
> 25-30	209 (27)	29		0.94	0.59 to 1.48		104 (26)	52		1.01	0.53 to 1.92	
> 30	176 (23)	27		0.99	0.61 to 1.61		112 (28)	50		0.83	0.44 to 1.57	
Unknown	86 (11)	13		0.41	0.18 to 0.94		63 (16)	30		0.94	0.40 to 2.24	
Insurance			.003			—			.03			—
Commercial	312 (41)	20		—		—	163 (41)	41		—		—
Medicare	379 (50)	30		—		—	204 (52)	53		—		—
Medicaid	40 (5)	18		—		—	18 (5)	39		—		—
Other	31 (4)	13		—		—	11 (3)	18		—		—
Income			.38*			.14*			.24*			.81*
1 (lowest)	203 (27)	28		1.00			81 (20)	53		1.00		
2	191 (25)	23		0.88	0.52 to 1.50		89 (22)	38		0.68	0.32 to 1.43	
3	203 (27)	24		0.76	0.45 to 1.29		116 (29)	56		1.68	0.79 to 3.55	
4 (highest)	165 (22)	24		0.70	0.39 to 1.25		110 (28)	38		0.88	0.42 to 1.87	
GOG PS			.03			.02			.09			.65
0	474 (62)	24		1.00			227 (57)	44		1.00		
1-2	160 (21)	32		1.63	1.00 to 2.64		111 (28)	55		1.26	0.69 to 2.33	
Unknown	128 (17)	19		2.22	1.08 to 4.56		58 (15)	40		1.36	0.57 to 3.26	
Charlson comorbidity score			.02			.44			.18			.06
0	606 (80)	22		1.00			309 (78)	44		1.00		
1	117 (15)	33		1.38	0.84 to 2.28		66 (17)	55		2.03	1.04 to 3.95	
≥ 2	39 (5)	33		1.14	0.50 to 2.56		21 (5)	57		2.50	0.76 to 8.29	
Primary site			< .001			.001			.31			.13
Ovarian	571 (75)	21		1.00			326 (82)	45		1.00		
Fallopian	53 (7)	34		1.36	0.68 to 2.71		15 (4)	60		3.08	0.89 to 10.66	
Peritoneal	138 (18)	38		2.46	1.55 to 3.91		55 (14)	53		1.50	0.73 to 3.10	
Histology			.32			.70			.001			.001
Serous	575 (75)	26		1.00			271 (68)	41		1.00		
Nonserous	187 (25)	22		0.91	0.68 to 1.44		125 (32)	59		2.46	1.42 to 4.25	
Grade			.04			.001			< .001			.001
I-II	144 (19)	31		1.00			96 (24)	63		1.00		
III	618 (81)	23		0.45	0.28 to 0.72		300 (76)	41		0.34	0.19 to 0.63	

(continued on following page)

**Table 1.** Characteristics of Patients With Stages IIIC and IV Ovarian Cancer Who Received NACT Versus PCS at National Comprehensive Cancer Network Centers, Excluding Clinical Trial Participants (2003-2012) (continued)

Characteristic	Stage IIIC						Stage IV					
	Unadjusted			Adjusted			Unadjusted			Adjusted		
	Overall No. (%)	% NACT	P	Odds Ratio	95% CI	P	Overall No. (%)	% NACT	P	Odds Ratio	95% CI	P
CA-125												
< 35	30 (4)	20	.17	1.00		.02	8 (2)	50	.02			.04
35-500	270 (35)	23		1.00			132 (33)	44				
> 500-1,000	88 (12)	25		1.35	0.73 to 2.51		39 (10)	54		1.00	0.80 to 4.72	
> 1,000	258 (34)	29		1.89	1.21 to 2.95		143 (36)	55		1.94	0.99 to 3.17	
Unknown	116 (15)	18		0.84	0.45 to 1.56		74 (19)	31		1.77	0.35 to 1.53	
Ascites			.11			.88			.59			.42
Absent	415 (54)	22		1.00			216 (55)	48		1.00		
Present	347 (46)	27		1.03	0.70 to 1.51		180 (45)	45		0.81	0.50 to 1.34	
Institution†			.04			.001			.001			.007
1	—	8		0.15	0.03 to 0.70		—	27		0.14	0.04 to 0.48	
2	—	29		1.21	0.65 to 2.26		—	33		0.24	0.11 to 0.54	
3	—	27		0.64	0.34 to 1.21		—	61		0.42	0.17 to 1.03	
4	—	30		1.00			—	58		1.00		
5	—	21		0.47	0.24 to 0.90		—	52		0.38	0.15 to 0.98	
6	—	20		0.36	0.18 to 0.74		—	49		0.40	0.15 to 1.03	
Year of diagnosis			< .001*			< .001*			< .001*			< .001*
2003-2004	96 (13)	20		1.00			52 (13)	40		1.00		
2005-2006	220 (29)	11		0.51	0.25 to 1.05		84 (21)	24		0.33	0.14 to 0.77	
2007-2008	154 (20)	23		1.39	0.69 to 2.83		80 (20)	43		1.33	0.58 to 3.03	
2009-2010	173 (23)	34		2.35	1.18 to 4.69		123 (31)	60		2.56	1.14 to 5.73	
2011-2012	119 (16)	44		4.81	2.26 to 10.2		57 (14)	61		2.34	0.93 to 5.86	

Abbreviations: BMI, body mass index; CA-125, cancer antigen 125; GOG PS, Gynecologic Oncology Group performance status; NACT, neoadjuvant chemotherapy; PCS, primary cytoreductive surgery.  
 \* P value calculated from test for trend across ordinal categories.  
 † All identifiers of the institution are suppressed to avoid identification of specific institutions.

(cohort 1). In women with stage IIIC disease, NACT use increased from 16% during 2003 to 2010 to 34% during 2011 to 2012 ( $P_{\text{trend}} < .001$ ). For women with stage IV disease, NACT use increased from 41% during 2003 to 2010 to 62% during 2011 to 2012 ( $P_{\text{trend}} < .001$ ).

### Factors Associated With NACT Use

Table 1 shows the characteristics of patients who received NACT versus PCS for stages IIIC and IV ovarian cancer, excluding clinical trial participants and those who received IP/IV chemotherapy (cohort 2). In adjusted analyses, patients with stage IIIC were more likely to receive NACT, compared with PCS, if they were older, had a higher performance status, or had a preoperative CA-125 of  $> 1,000$  (all  $P \leq .02$ ); in patients with stage IV disease, age and CA-125 were significantly associated with NACT use ( $P \leq .04$ ). Use of NACT varied significantly by institution, with an unadjusted range of 8% to 30% in stage IIIC disease ( $P < .001$ ) and 27% to 61% in stage IV disease ( $P = .007$ ).

### Treatments Received

In cohort 2, 188 (25%) of 762 patients with stage IIIC disease and 184 (46%) of 396 patients with stage IV disease received NACT (Appendix Table A1, online only). Among patients who received NACT, 27 (14%) of 188 with stage IIIC and 53 (29%) of 184 with stage IV disease did not receive ICS. Among patients who received PCS, 54 (9%) of 574 patients with stage IIIC and 16 (8%) of 212 with stage IV disease did not receive postoperative chemotherapy.

### Survival Outcomes

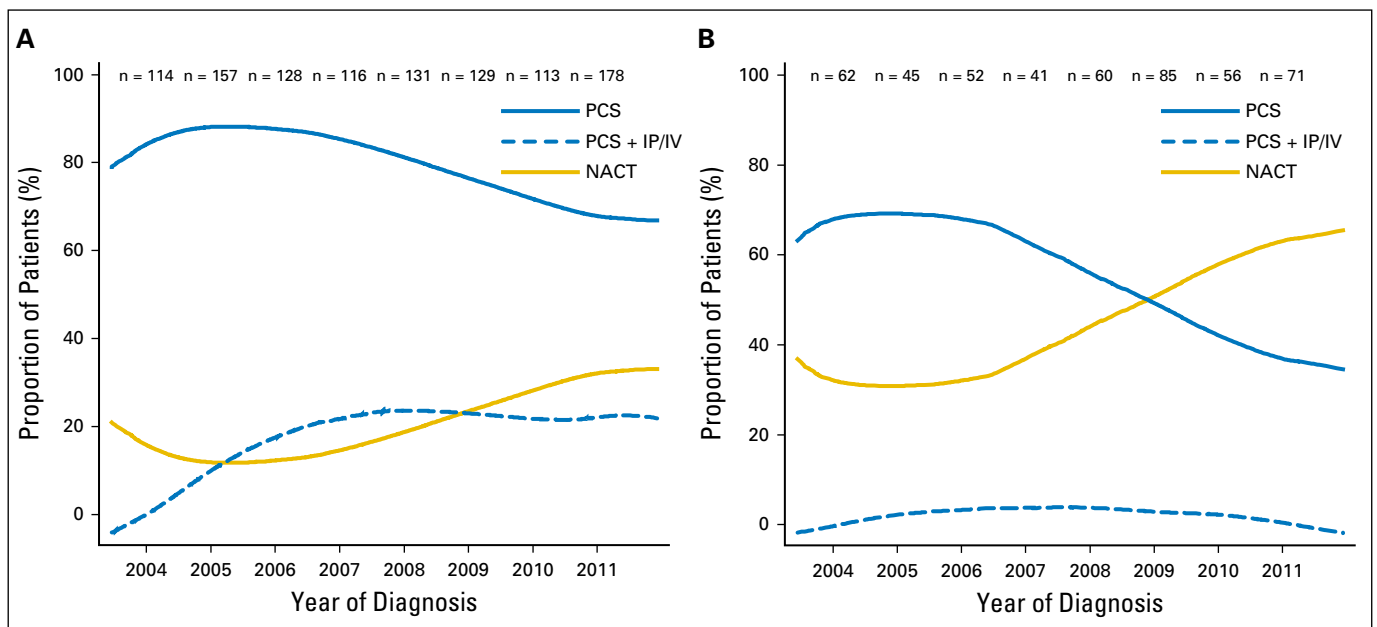
Propensity-score matching between NACT and PCS groups yielded 174 (93%) of 188 matched pairs for patients with stage IIIC

ovarian cancer who received NACT and 123 (67%) of 184 matched pairs for patients with stage IV disease (Appendix Table A2, online only); standardized differences were  $< 10\%$  for all variables (Appendix Table A3, online only). Median follow-up for survivors was 61 months and 70 months, respectively, for patients with stage IIIC and IV disease.

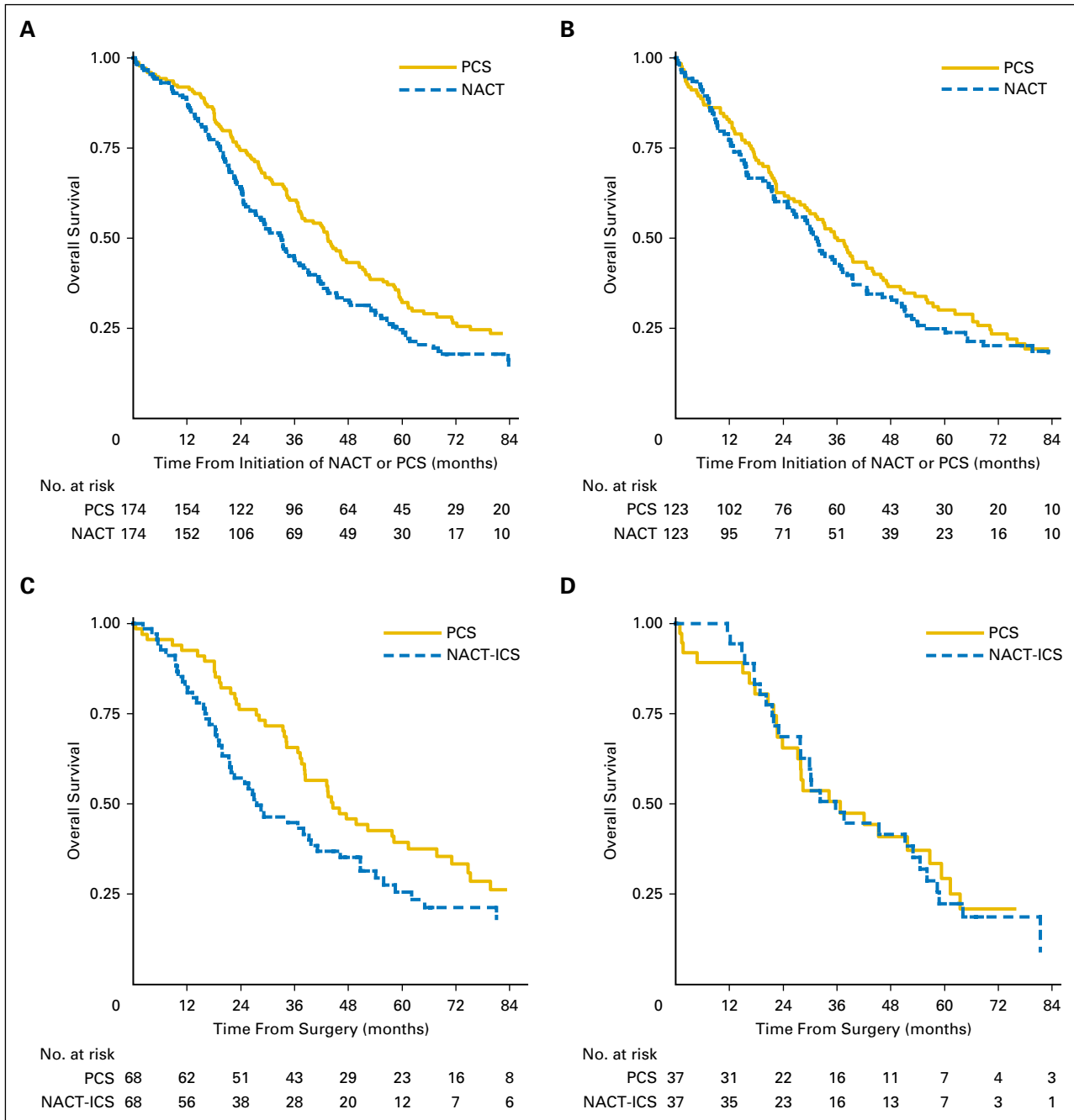
Patients with stage IIIC disease who received NACT had significantly decreased OS compared with those treated with PCS (median, 33 months  $\nu$  43 months; HR, 1.40; 95% CI, 1.11 to 1.77; Fig 2A and Table 2). However, there was no significant difference in OS among patients with stage IV disease (median, 31 months  $\nu$  36 months; HR, 1.16; 95% CI, 0.89 to 1.52; Fig 2B).

Survival outcomes were robust to sensitivity analyses, which tested associations between NACT and OS with the addition of an unmeasured confounder—high disease burden—receipt of IP/IV chemotherapy, a 3-month landmark analysis, and a cohort that excluded patients who received NACT without ICS (Table 2). Our results were robust to relatively large differences in the prevalence of high disease burden. For example, given evidence that high preoperative disease burden is associated with higher mortality (HR, 1.56) compared with moderate or low burden disease,<sup>13</sup> if 80% of women who received NACT and 60% of women who received PCS had high burden disease, then the association between PCS and increased OS was still significant (Appendix Table A4, online only). There were few differences in the models that included patients who received IP/IV chemotherapy (Table 2 and Appendix Fig A2, online only).

In a subset analysis performed to compare survival outcomes stratified by residual disease, we found that NACT was associated with significantly decreased OS within the subgroup of patients who had stage IIIC disease and  $\leq 1$  cm residual disease after surgery (HR, 1.49; 95% CI, 1.01 to 2.18;  $P = .04$ ) compared with



**Fig 1.** (A) Stage IIIC disease. (B) Stage IV disease. Use of neoadjuvant chemotherapy (NACT) increased significantly over time ( $P_{\text{trend}} < .001$  for both groups). Intraperitoneal and intravenous (IP/IV) chemotherapy is shown for comparison. Three patients with stage IIIC disease and one with stage IV who were diagnosed in 2003 are included in the estimate for 2004. Twenty-three patients with stage IIIC disease and seven with stage IV who were diagnosed in 2012 are included in the estimate for 2011. PCS, primary cytoreductive surgery.



**Fig 2.** Kaplan-Meier survival plots within propensity-score matched samples, separately by treatment with neoadjuvant chemotherapy (NACT) versus primary cytoreductive surgery (PCS). (A) Stage IIIC disease. (B) Stage IV disease. (C) Stage IIIC disease,  $\leq 1$  cm or optimal. (D) Stage IIIC disease, R0 resection. Panels C and D are limited to matched pairs who received interval cytoreductive surgery (NACT-ICS) versus PCS.

PCS (Fig 2C). In this group, median survival was 45 months in patients who received PCS compared with 28 months in patients who received NACT. Among the small subset of patients who achieved no gross residual disease ( $n = 74$ ), survival was similar between the two treatment groups (HR, 1.08; 95% CI, 0.69 to 1.69; Fig 2D). Finally, adjusted HRs for NACT versus PCS ranged from 1.31 to 1.53 for stage IIIC disease and from 1.03 to 1.28 for stage IV disease upon excluding institutions one by one, which indicated that our findings were not driven by outcomes at a single institution.

**Surgical Morbidity Outcomes**

As shown in Table 3, there were no significant differences in 28-day mortality, venous thrombotic events, cardiac complications, or respiratory failure between patients with stage IIIC disease who received PCS or NACT. In adjusted analyses, patients who received NACT were less likely to be admitted to an intensive care unit (ICU; 1.1%  $\nu$  8.0%;  $P = .01$ ) or rehospitalized (4.6%  $\nu$  12.1%;  $P = .01$ ) compared with those who received PCS. As shown in Table 4, results were similar among patients with stage IV disease. In the subset of patients who received NACT

**Table 2.** Results of Cox Proportional Hazards Regression Model for the Association Between NACT and PCS and Overall Survival Within Propensity-Score Matched Samples

Disease Stage	Primary Analysis	Sensitivity to Unmeasured Confounder of High Disease Burden*	Sensitivity Analyses		
			Inclusion of Patients Receiving IP/IV Chemotherapy†	3-Month Landmark Analysis‡	Restricted to Patients Who Received Cytoreductive Surgery
<b>Stage IIIC</b>					
No. of patients	348	348	360	324	306
NACT v PCS, HR (95% CI)	1.40 (1.11 to 1.77)	1.32 (1.04 to 1.66)	1.34 (1.06 to 1.70)	1.46 (1.14 to 1.85)	1.39 (1.09 to 1.78)
<b>Stage IV</b>					
No. of patients	246	246	268	218	200
NACT v PCS, HR (95% CI)	1.16 (0.89 to 1.52)	1.09 (0.84 to 1.43)	1.09 (0.82 to 1.45)	1.18 (0.87 to 1.59)	1.10 (0.81 to 1.50)

NOTE. HRs > 1 represent worse survival for NACT versus PCS.

Abbreviations: IP/IV, intraperitoneal and intravenous; NACT, neoadjuvant chemotherapy; PCS, primary cytoreductive surgery.

\*Assuming an HR of 1.56 for high burden disease and an overall prevalence of high-risk disease of 60%.<sup>12</sup> Applying a risk ratio of 1.3, (which corresponds to the observed risk ratio for unfavorable Gynecologic Oncology Group performance status between the two treatment groups, we assumed further that the prevalence of high-risk disease was 70% for NACT versus 55% for PCS. See Appendix Table A4 for complete results of the sensitivity analysis to the unmeasured confounder of high-burden disease.

†Among 360 patients with stage IIIC disease, 7 of 180 NACT and 26 of 180 PCS patients received IP/IV chemotherapy; among 268 patients with stage IV disease, 5 of 134 NACT and 9 of 134 PCS patients received IP/IV chemotherapy.

‡Limited to matched pairs from the primary analysis who survived at least 3 months after diagnosis.

without ICS, 32% of patients with stage IV disease and 22% of patients with stage IIIC disease died within 28 days of their first cycle of NACT.

### Surgical Aggressiveness and Complexity Outcomes

Patients in the NACT group received a median of four cycles of chemotherapy before ICS and three cycles postoperatively, whereas patients in the PCS group received a median of six cycles of chemotherapy postoperatively (Tables 3 and 4). Those who received NACT were significantly less likely to have gross residual disease of  $\geq 1$  cm after ICS (stage IIIC: 5.5% v 30.1%;  $P = .01$ ; stage IV: 13.4% v 38.1%;  $P = .01$ ) compared with patients who underwent PCS.

Irrespective of stage, most patients who underwent NACT or PCS had low surgical complexity scores (Tables 3 and 4). In adjusted analyses, NACT was not significantly associated with lower complexity scores or decreased aggressiveness of surgery, that is, upper abdominal or exenterative procedures, ostomies. However, in patients with stage IIIC disease, NACT was associated with fewer bowel resections (small bowel: 2.1% v 12.3%;  $P = .004$ ; large bowel: 13.7% v 28.8%;  $P = .003$ ) compared with PCS. Similar associations were observed in patients with stage IV disease, although they did not reach statistical significance.

## DISCUSSION

In this study of the use and effectiveness of NACT in patients with stages IIIC and IV ovarian cancer at six major cancer centers, we found that the adoption of NACT increased steadily over time from 16% to 34% (stage IIIC) and from 41% to 62% (stage IV) between 2003 and 2011. We also found that PCS was associated with significantly improved survival in women with stage IIIC ovarian cancer compared with NACT, but not in patients with stage IV

disease. Patients who received NACT were more likely to achieve  $\leq 1$  cm or microscopic residual disease after ICS compared with PCS, but there were few differences in the complexity, aggressiveness, or complications of surgery. Of note, patients who received NACT were less likely to be admitted to an ICU or to be rehospitalized compared with patients who received PCS.

To our knowledge, this is one of the first, multi-institutional comparative effectiveness studies to demonstrate that PCS is associated with significantly improved survival among women with stage IIIC ovarian cancer. Although these results differ from the main findings of two large, prospective randomized trials, they are consistent with a subset analysis in the EORTC study which demonstrated improved survival in patients with stage IIIC ovarian cancer and  $\leq 45$  mm of disease in patients who received PCS versus NACT. Consistent with data from published RCTs, we observed no significant differences in survival between patients with stage IV disease who were treated with PCS and NACT.

Of note, although patients with stage IIIC disease who received NACT were significantly more likely to have  $\leq 1$  cm or R0 microscopic residual disease after ICS, this was not associated with a survival benefit. In contrast, patients who achieved  $\leq 1$  cm of residual disease after PCS had significantly longer survivals compared with comparable patients who received NACT. These findings suggest that optimal resection after ICS is not equivalent to PCS, perhaps because microscopic chemoresistant subclones may remain.<sup>14,15</sup> Future studies should prospectively compare survival outcomes of patients treated with PCS versus NACT stratified by residual disease after surgery.

In prior studies, R0 resection at the time of PCS has been shown to be the single most important independent prognostic factor in advanced ovarian cancer,<sup>16-20</sup> with a reported median survival of 110 months.<sup>21</sup> These findings have led to a redefinition of the term optimal cytoreduction, from no residual mass  $> 1.0$  cm to a new standard of complete resection to no visible residual disease.<sup>22,23</sup> In our patient population, we did not observe

Effectiveness of Neoadjuvant Chemotherapy in Ovarian Cancer

**Table 3.** Comparison of Chemotherapy, Morbidity, and Surgical Outcomes Between Patients With Stage IIIC Ovarian Cancer Who Underwent NACT Versus PCS Treatment

Variable	Unadjusted (%)				Propensity-Score Matched Sample (%)				
	NACT Without ICS	NACT-ICS	NACT Overall	PCS	NACT	PCS	Odds Ratio	95% CI	P
<b>Cycles of chemotherapy</b>									
No. of patients	27	161	188	574	174	174			
Preoperative, median (IQR)	4 (2-6)	4 (3-5)	4 (3-6)	—	4 (3-6)		—	—	
Postoperative, median (IQR)	—	3 (3-4)	3 (3-4)	6 (6-6)	3 (3-4)	6 (5-6)	—	—	
<b>Chemotherapy regimen</b>									
Platinum-taxane	85.2	94.4	93.1	82.3	94.8	81.6	—	—	
Platinum + other nontaxol drug	0.0	0.0	0.0	0.4	0.0	0.0	—	—	
Single agent platinum	14.8	3.1	4.8	6.3	2.9	4.6	—	—	
Other/unknown	0.0	2.5	2.1	1.8	2.3	2.9	—	—	
None	0.0	0.0	0.0	9.4	0.0	10.9	—	—	
<b>Mortality and morbidity*</b>									
Death	22.2	0.6	3.7	1.0	2.3	1.1	2.00	0.37 to 10.9	.42
Anemia	7.4	2.5	3.2	3.7	3.4	4.0	0.86	0.29 to 2.55	.78
Infection	3.7	3.1	3.2	5.9	3.4	7.5	0.46	0.18 to 1.21	.12
Venous thrombosis or embolus	3.7	2.5	2.7	5.7	2.9	5.2	0.50	0.15 to 1.66	.26
Anastomotic or vaginal leak	0.0	0.6	0.5	2.3	0.6	1.1	0.50	0.05 to 5.51	.57
Cardiac/CVA event	0.0	0.0	0.0	1.4	0.0	1.1	—	—	—
Pneumonia, respiratory failure	7.4	1.2	2.1	3.1	1.1	2.9	0.40	0.08 to 2.06	.27
Hospitalization	18.5	2.5	4.8	12.0	4.6	12.1	0.32	0.13 to 0.79	.01
Admission to ICU	3.7	1.2	1.6	6.1	1.1	8.0	0.08	0.01 to 0.59	.01
<b>Surgical outcomes†</b>									
No. of patients	—	158	—	567	146	146			
<b>Residual disease‡</b>									
None		38.6		20.8	39.0	23.3	1.00		
≤ 1 cm or optimal		53.2		46.9	52.7	41.8	0.77	0.43 to 1.38	.38
≥ 1 cm or suboptimal		5.7		27.0	5.5	30.1	0.07	0.01 to 0.50	.01
Unknown		2.5		5.3	2.7	4.8	—	—	—
<b>Aggressiveness of surgery</b>									
TAH + BSO + omentectomy		98.1		96.8	97.9	97.9	1.00	0.20 to 4.95	.99
Small bowel resection		1.9		9.0	2.1	12.3	0.17	0.05 to 0.57	.004
Large bowel resection		13.9		27.5	13.7	28.8	0.39	0.21 to 0.72	.003
Colostomy/ileostomy		3.2		6.9	2.7	6.8	0.33	0.09 to 1.23	.10
Pelvic/para-aortic lymphadenectomy		32.3		35.4	32.9	28.1	1.23	0.76 to 1.97	.40
Upper abdominal procedures		10.8		11.1	11.6	11.0	1.07	0.53 to 2.16	.86
Exenterative procedures		0.6		0.7	0.7	1.4	0.50	0.05 to 5.51	.57
<b>Complexity score‡</b>									
Low (1-3)		70.9		57.5	69.2	58.9	1.00		
Moderate (4-7)		27.8		37.7	29.5	36.3	0.71	0.44 to 1.14	.15
High (≥ 8)		1.3		4.8	1.4	4.8	0.25	0.03 to 2.24	.22

Abbreviations: BSO, bilateral salpingo-oophorectomy; CVA, cerebral vascular accident; ICS, interval cytoreductive surgery; ICU, intensive care unit; IQR, interquartile range; NACT, neoadjuvant chemotherapy; PCS, primary cytoreductive surgery; TAH, total abdominal hysterectomy.

\*Morbidity was assessed within 28 days after first surgery (NACT-ICS or PCS patients) or within 28 days after completion of NACT (NACT patients who did not go on to undergo ICS).

†Among NACT patients who underwent ICS.

‡Odds ratios were determined from multinomial logistic regression with no residual disease and low complexity score as the base outcome variables.

a survival difference between patients who received NACT or PCS and who achieved an R0 resection. This may be a result of misclassification, that is, patients cytoreduced to no gross residual may have been categorized as optimal, as the importance between the distinction of an R0 resection and ≤ 1 cm residual was not widely recognized during the study period. In addition, this analysis was limited by a small sample size.

We also found fewer differences between PCS and NACT than expected in the morbidity, aggressiveness of surgery, and surgical complexity scores. Although fewer morbidities tended to be associated with NACT, there were few statistically significant differences. This may be because the overall surgical morbidity among all groups was low at these major academic centers.

The degree of variation in the use of NACT between such similar academic institutions was notable, particularly because patients' sociodemographic and disease characteristics are relatively uniform across NCCN centers.<sup>24</sup> These findings suggest that uptake of NACT is influenced by local culture and clinical practice leaders within institutions.<sup>25,26</sup> Patients' preferences may also have contributed.<sup>27</sup>

Our study has limitations that are inherent to all observational studies, including potential selection bias, as we were unable to control for unobserved confounds, for example, physician bias or operative effort, despite rigorous propensity-score analyses. In addition, the match rate for patients with stage IV disease was moderate (67%), although our results were robust to multiple sensitivity analyses. Despite these limitations, our study had many



**Table 4.** Comparison of Chemotherapy, Morbidity, and Surgical Outcomes Between Patients With Stage IV Ovarian Cancer Who Underwent NACT Versus PCS Treatment

Variable	Unadjusted (%)				Propensity-Score Matched Sample (%)				
	NACT Without ICS	NACT-ICS	NACT Overall	PCS	NACT	PCS	Odds Ratio	95% CI	P
<b>Cycles of chemotherapy</b>									
No. of patients	53	131	184	212	123	123			
Preoperative, median (IQR)	3 (1-6)	4 (3-6)	4 (3-6)	—	4 (3-6)	6 (5-6)	—	—	
Postoperative, median (IQR)	—	3 (3-5)	3 (3-5)	6 (5-6)	3 (3-4)		—	—	
<b>Chemotherapy regimen</b>									
Platinum-taxane	86.8	95.4	92.9	83.0	94.3	82.9	—	—	
Platinum + other nontaxane drug	0.0	0.8	0.5	0.5	0.0	0.8	—	—	
Single agent platinum	13.2	2.3	5.4	6.1	4.9	5.7	—	—	
Other/unknown	0.0	1.5	1.1	2.8	0.8	4.1	—	—	
None	0.0	0.0	0.0	7.5	0.0	6.5	—	—	
<b>Mortality and morbidity*</b>									
Death	32.1	2.3	10.9	0.9	8.1	1.6	5.00	1.10 to 22.8	0.03
Anemia	7.5	5.3	6.0	4.2	5.7	4.9	1.20	0.37 to 3.93	0.76
Infection	5.7	0.8	2.2	7.5	2.4	6.5	0.38	0.10 to 1.41	0.15
Venous thrombosis or embolus	5.7	2.3	3.3	8.0	4.1	7.3	0.56	0.19 to 1.66	0.29
Anastomotic or vaginal leak	0.0	0.0	0.0	1.9	0.0	2.4	—	—	—
Cardiac/CVA event	3.8	0.0	1.1	0.9	0.8	0.8	1.00	0.06 to 16.0	0.99
Pneumonia, respiratory failure	3.8	1.5	2.2	5.2	2.4	5.7	0.43	0.11 to 1.66	0.22
Hospitalization	26.4	3.1	9.8	18.9	8.1	17.1	0.45	0.20 to 0.99	0.04
Admission to ICU	9.4	1.5	3.8	10.8	2.4	10.6	0.17	0.04 to 0.74	0.02
<b>Surgical outcomes†</b>									
Number of patients	—	129	—	209	97	97			
<b>Residual disease‡</b>									
None		39.5		12.4	38.1	14.4	1.00		
≤ 1 cm or optimal		41.9		47.4	42.3	44.3	0.35	0.14 to 0.90	0.03
≥ 1 cm or suboptimal		12.4		34.0	13.4	38.1	0.14	0.03 to 0.63	0.01
Unknown		6.2		6.2	6.2	3.1	—	—	—
<b>Aggressiveness of surgery</b>									
TAH + BSO + omentectomy		98.4		95.7	99.0	93.8	6.00	0.72 to 49.8	0.10
Small bowel resection		3.1		10.0	4.1	8.2	0.50	0.15 to 1.66	0.26
Large bowel resection		10.1		25.8	12.4	21.6	0.53	0.24 to 1.13	0.10
Colostomy/ileostomy		4.7		8.1	6.2	7.2	0.83	0.25 to 2.73	0.76
Pelvic/para-aortic lymphadenectomy		21.7		25.4	22.7	22.7	1.00	0.48 to 2.10	0.99
Upper abdominal procedures		10.9		16.3	13.4	12.4	1.10	0.47 to 2.59	0.83
Exenterative procedures		0.8		1.0	1.0	0.0	—	—	—
<b>Complexity score‡</b>									
Low (1-3)		76.0		60.8	71.1	64.9	1.00		
Moderate (4-7)		23.3		35.4	27.8	33.0	0.75	0.38 to 1.46	0.40
High (≥ 8)		0.8		3.8	1.0	2.1	0.50	0.05 to 5.51	0.57

Abbreviations: BSO, bilateral salpingo-oophorectomy; CVA, cerebral vascular accident; ICS, interval cytoreductive surgery; ICU, intensive care unit; IQR, interquartile range; NACT, neoadjuvant chemotherapy; PCS, primary cytoreductive surgery; TAH, total abdominal hysterectomy.

\*Morbidity was assessed within 28 days after first surgery (NACT-ICS or PCS patients) or within 28 days after completion of NACT (NACT patients who did not go on to undergo ICS).

†Among NACT patients who underwent ICS.

‡Odds ratios were determined from multinomial logistic regression with no residual disease and low complexity score as the base outcome variables.

strengths, including the fact that it likely included a more representative population of patients than has traditionally been enrolled in prior RCTs that compared NACT and PCS treatment. In addition, we were able to adjust for many clinical characteristics that are rarely available in population-based databases, yet have important prognostic implications, for example, performance status, baseline CA-125, and extent of residual disease.<sup>21</sup> In addition, our findings were robust to substantial differences in one potential confounder: high disease burden.

Another limitation was our inability to determine PFS accurately, although PFS may be more prone to bias than OS in clinical practice as it depends on other factors, for example, frequency of surveillance testing with CA-125 or computed tomography scans.<sup>28</sup> Although we expect our results to be more

generalizable than clinical trials, they may not be representative of clinical practice outside of academic institutions as most are high-volume hospitals, a factor associated with improved survival.<sup>29,30</sup>

In conclusion, our findings demonstrate that use of NACT at NCCN centers increased significantly over time. Although additional biases may persist despite propensity-score matching, our results suggest that in carefully selected patients with stage IIIC disease, PCS is associated with a survival advantage, with overall low rates of surgical morbidity. In contrast, for patients with stage IV disease, our results confirm that NACT is noninferior to PCS for survival, with fewer ICU admissions and rehospitalizations, which suggests that NACT may be preferable for patients with stage IV ovarian cancer.

## AUTHORS' DISCLOSURES OF POTENTIAL CONFLICTS OF INTEREST

Disclosures provided by the authors are available with this article at [www.jco.org](http://www.jco.org).

## AUTHOR CONTRIBUTIONS

**Conception and design:** Larissa A. Meyer, Angel M. Cronin, Charlotte C. Sun, Alexi A. Wright

**Financial support:** Larissa A. Meyer, Alexi A. Wright

**Administrative support:** Larissa A. Meyer, Alexi A. Wright

**Provision of study materials or patients:** Larissa A. Meyer, Jennifer J. Griggs, Mihaela C. Cristea, Robert A. Burger, Ursula A. Matulonis, David M. O'Malley, Alexi A. Wright

**Collection and assembly of data:** Larissa A. Meyer, Charlotte C. Sun, Kristin Bixel, Mihaela C. Cristea, Jennifer J. Griggs, Charles F. Levenback, Gina Mantia-Smaldone, Ursula A. Matulonis, Joyce C. Niland, David M. O'Malley, Alexi A. Wright

**Data analysis and interpretation:** Larissa A. Meyer, Angel M. Cronin, Charlotte C. Sun, Kristin Bixel, Michael A. Bookman, Mihaela C. Cristea, Jennifer J. Griggs, Robert A. Burger, Ursula A. Matulonis, Joyce C. Niland, David M. O'Malley, Alexi A. Wright

**Manuscript writing:** All authors

**Final approval of manuscript:** All authors

**Accountable for all aspects of the work:** All authors

## REFERENCES

- Vergote I, Tropé CG, Amant F, et al: Neoadjuvant chemotherapy or primary surgery in stage IIIC or IV ovarian cancer. *N Engl J Med* 363:943-953, 2010
- Kehoe S, Hook J, Nankivell M, et al: Primary chemotherapy versus primary surgery for newly diagnosed advanced ovarian cancer (CHORUS): An open-label, randomised, controlled, non-inferiority trial. *Lancet* 386:249-257, 2015
- Bristow RE, Chi DS: Platinum-based neoadjuvant chemotherapy and interval surgical cytoreduction for advanced ovarian cancer: A meta-analysis. *Gynecol Oncol* 103:1070-1076, 2006
- Kang S, Nam BH: Does neoadjuvant chemotherapy increase optimal cytoreduction rate in advanced ovarian cancer? Meta-analysis of 21 studies. *Ann Surg Oncol* 16:2315-2320, 2009
- Armstrong DK, Bundy B, Wenzel L, et al: Intraperitoneal cisplatin and paclitaxel in ovarian cancer. *N Engl J Med* 354:34-43, 2006
- Wright AA, Cronin A, Milne DE, et al: Use and effectiveness of intraperitoneal chemotherapy for treatment of ovarian cancer. *J Clin Oncol* 33:2841-2847, 2015
- Unger JM, Barlow WE, Martin DP, et al: Comparison of survival outcomes among cancer patients treated in and out of clinical trials. *J Natl Cancer Inst* 106:dju002, 2014
- Aletti GD, Dowdy SC, Podratz KC, et al: Relationship among surgical complexity, short-term morbidity, and overall survival in primary surgery for advanced ovarian cancer. *Am J Obstet Gynecol* 197:676.e1-7, 2007
- Charlson ME, Pompei P, Ales KL, et al: A new method of classifying prognostic comorbidity in longitudinal studies: Development and validation. *J Chronic Dis* 40:373-383, 1987
- D'Agostino RB Jr: Propensity score methods for bias reduction in the comparison of a treatment to a non-randomized control group. *Stat Med* 17:2265-2281, 1998
- Rosenbaum P, Rubin DB: Reducing bias in observational studies using subclassification on the propensity score. *J Am Stat Assoc* 79:516-524, 1984
- Haukoos JS, Lewis RJ: The propensity score. *JAMA* 314:1637-1638, 2015
- Horowitz NS, Miller A, Rungruang B, et al: Does aggressive surgery improve outcomes? Interaction between preoperative disease burden and complex surgery in patients with advanced-stage ovarian cancer: An analysis of GOG 182. *J Clin Oncol* 33:937-943, 2015
- Schwarz RF, Ng CK, Cooke SL, et al: Spatial and temporal heterogeneity in high-grade serous ovarian cancer: A phylogenetic analysis. *PLoS Med* 12:e1001789, 2015
- Cooke SL, Ng CK, Melnyk N, et al: Genomic analysis of genetic heterogeneity and evolution in high-grade serous ovarian carcinoma. *Oncogene* 29:4905-4913, 2010
- Zivanovic O, Eisenhauer EL, Zhou Q, et al: The impact of bulky upper abdominal disease cephalad to the greater omentum on surgical outcome for stage IIIC epithelial ovarian, fallopian tube, and primary peritoneal cancer. *Gynecol Oncol* 108:287-292, 2008
- Aletti GD, Dowdy SC, Podratz KC, et al: Surgical treatment of diaphragm disease correlates with improved survival in optimally debulked advanced stage ovarian cancer. *Gynecol Oncol* 100:283-287, 2006
- Bristow RE, Tomacruz RS, Armstrong DK, et al: Survival effect of maximal cytoreductive surgery for advanced ovarian carcinoma during the platinum era: A meta-analysis. *J Clin Oncol* 20:1248-1259, 2002
- Chi DS, Eisenhauer EL, Lang J, et al: What is the optimal goal of primary cytoreductive surgery for bulky stage IIIC epithelial ovarian carcinoma (EOC)? *Gynecol Oncol* 103:559-564, 2006
- Polterauer S, Vergote I, Concin N, et al: Prognostic value of residual tumor size in patients with epithelial ovarian cancer FIGO stages IIA-IV: Analysis of the OVCAD data. *Int J Gynecol Cancer* 22:380-385, 2012
- Landrum LM, Java J, Mathews CA, et al: Prognostic factors for stage III epithelial ovarian cancer treated with intraperitoneal chemotherapy: A Gynecologic Oncology Group study. *Gynecol Oncol* 130:12-18, 2013
- Hodeib M, Eskander RN, Bristow RE: New paradigms in the surgical and adjuvant treatment of ovarian cancer. *Minerva Ginecol* 66:179-192, 2014
- Chang SJ, Bristow RE: Evolution of surgical treatment paradigms for advanced-stage ovarian cancer: Redefining 'optimal' residual disease. *Gynecol Oncol* 125:483-492, 2012
- Weeks JC, Uno H, Taback N, et al: Interinstitutional variation in management decisions for treatment of 4 common types of cancer: A multi-institutional cohort study. *Ann Intern Med* 161:20-30, 2014
- Rogers EM: *Diffusion of Innovation*. New York, NY, The Free Press, 2003
- Chassin MR: Explaining geographic variations. The enthusiasm hypothesis. *Med Care* 31(5, Suppl) YS37-YS44, 1993
- Havrilesky LJ, Alvarez Secord A, Ehrisman JA, et al: Patient preferences in advanced or recurrent ovarian cancer. *Cancer* 120:3651-3659, 2014
- Salani R, Backes FJ, Fung MF, et al: Post-treatment surveillance and diagnosis of recurrence in women with gynecologic malignancies: Society of Gynecologic Oncologists recommendations. *Am J Obstet Gynecol* 204:466-478, 2011
- Bristow RE, Chang J, Ziogas A, et al: High-volume ovarian cancer care: Survival impact and disparities in access for advanced-stage disease. *Gynecol Oncol* 132:403-410, 2014
- Cliby WA, Powell MA, Al-Hammadi N, et al: Ovarian cancer in the United States: Contemporary patterns of care associated with improved survival. *Gynecol Oncol* 136:11-17, 2015

## AUTHORS' DISCLOSURES OF POTENTIAL CONFLICTS OF INTEREST

## Use and Effectiveness of Neoadjuvant Chemotherapy for Treatment of Ovarian Cancer

The following represents disclosure information provided by authors of this manuscript. All relationships are considered compensated. Relationships are self-held unless noted. I = Immediate Family Member, Inst = My Institution. Relationships may not relate to the subject matter of this manuscript. For more information about ASCO's conflict of interest policy, please refer to [www.asco.org/rwc](http://www.asco.org/rwc) or [jco.ascopubs.org/site/ifc](http://jco.ascopubs.org/site/ifc).

**Larissa A. Meyer**

**Honoraria:** TRM Oncology

**Research Funding:** AstraZeneca

**Angel M. Cronin**

No relationship to disclose

**Charlotte C. Sun**

**Research Funding:** AstraZeneca

**Kristin Bixel**

No relationship to disclose

**Michael A. Bookman**

**Employment:** McKesson

**Honoraria:** Genentech

**Consulting or Advisory Role:** Boehringer Ingelheim, Genentech, AstraZeneca, AbbVie, Sanofi, Novartis, Immunogen, Endocyte, Gradalis, Oxigene, Vertex, Pfizer, Clovis Oncology, Tesaro

**Mihaela C. Cristea**

**Honoraria:** Boehringer Ingelheim

**Consulting or Advisory Role:** Boehringer Ingelheim

**Research Funding:** Trovogene

**Jennifer J. Griggs**

No relationship to disclose

**Charles F. Levenback**

No relationship to disclose

**Robert A. Burger**

**Consulting or Advisory Role:** Genentech, Janssen Research & Development, NuCana BioMed, Gradalis, InVitae, Morphotek

**Gina Mantia-Smaldone**

No relationship to disclose

**Ursula A. Matulonis**

**Consulting or Advisory Role:** Merck KGaA, AstraZeneca, Immunogen, Genentech, Pfizer

**Joyce C. Niland**

No relationship to disclose

**David M. O'Malley**

**Honoraria:** Clovis Oncology

**Consulting or Advisory Role:** Janssen Oncology, Eisai, AstraZeneca, Clovis Oncology, Genentech

**Research Funding:** Amgen (Inst), VentiRx (Inst), AstraZeneca (Inst), Genentech (Inst), Regeneron (Inst), Immunogen (Inst), Array BioPharma (Inst), Janssen Research & Development (Inst), Clovis Oncology (Inst), EMD Serono (Inst), Ergomed (Inst), Ajinomoto (Inst), Cerulean Pharma (Inst), PharmaMar (Inst), Stem CentRx (Inst)

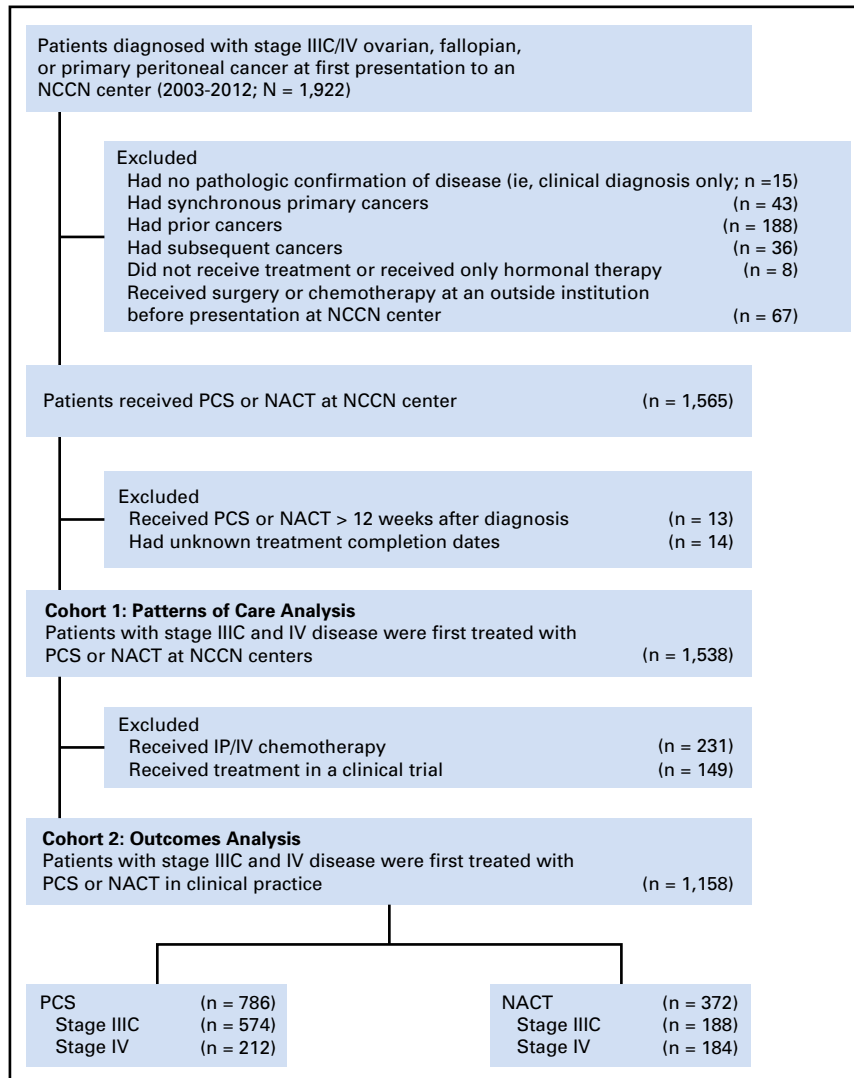
**Alexi A. Wright**

No relationship to disclose

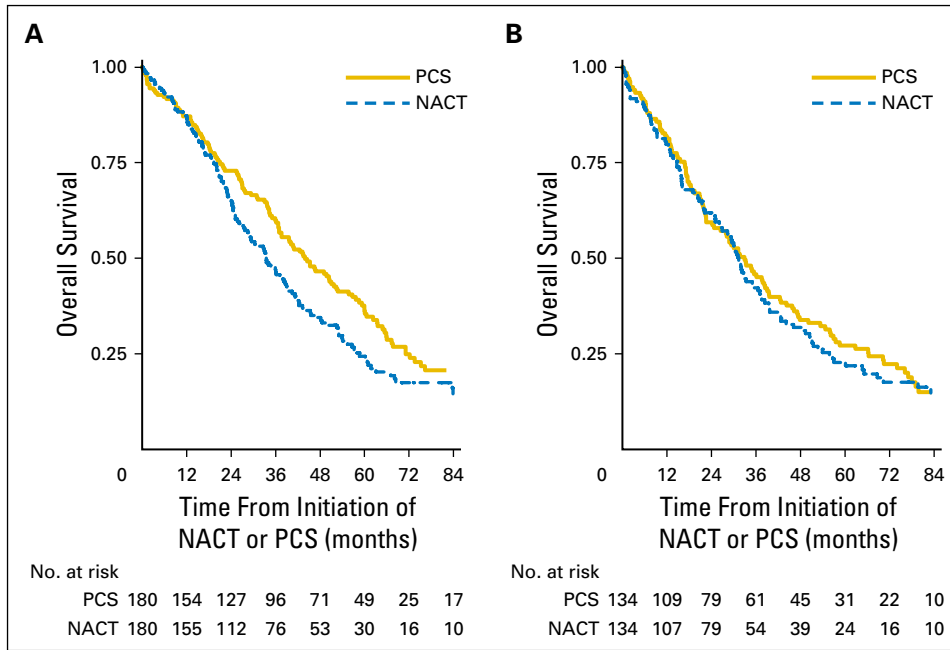
**Acknowledgment**

We acknowledge the following people for their contributions to this project: Jane C. Weeks, who was involved in the conception of this study and design of the database, but tragically did not live to see its completion; all of the study participants; the Ovarian Cancer Outcomes Consortium for material and administrative support; Janet Files and Dana Milne for administrative and organizational assistance; Layla Rouse and Monir Corona for assistance with development of the study database; and the National Comprehensive Cancer Network for providing support for the outcomes database infrastructure and management.

**Appendix**



**Fig A1.** Study cohort. IP/IV, intraperitoneal and intravenous; NACT, neoadjuvant chemotherapy; NCCN, National Comprehensive Cancer Network; PCS, primary cytoreductive surgery.



**Fig A2.** Sensitivity analysis including patients who received intraperitoneal and intravenous chemotherapy: Kaplan-Meier survival plots within propensity-score matched samples. (A) Stage IIIc disease. (B) Stage IV disease. NACT, neoadjuvant chemotherapy; PCS, primary cytoreductive surgery.

**Table A1.** Summary of Treatments Received

Treatment by Disease Stage	Cohort 1 (patterns of care)	Cohort 2 (outcomes)	
		Entire Cohort	Propensity-Score Matched Sample
Stage IIIc, No.	1,060	762	348
NACT, No. (%)			
Total	206 (100)	188 (100)	174 (100)
NACT + ICS + chemotherapy	170 (83)	155 (82)	149 (86)
NACT + ICS	6 (3)	6 (3)	4 (2)
NACT without ICS	30 (15)	27 (14)	21 (12)
PCS, No. (%)			
Total	860 (100)	574 (100)	174 (100)
PCS + chemotherapy	806 (94)	520 (91)	155 (89)
PCS without chemotherapy	54 (6)	54 (9)	19 (11)
Stage IV, No.	472	396	246
NACT, No. (%)			
Total	210 (100)	184 (100)	123 (100)
NACT + ICS + chemotherapy	141 (67)	116 (63)	86 (70)
NACT + ICS	15 (7)	15 (8)	14 (11)
NACT without ICS	54 (26)	53 (29)	23 (19)
PCS, No. (%)			
Total	262 (100)	212 (100)	123 (100)
PCS + chemotherapy	246 (94)	196 (92)	115 (94)
PCS without chemotherapy	16 (6)	16 (8)	8 (7)

Abbreviations: ICS, interval cytoreductive surgery; NACT, neoadjuvant chemotherapy; PCS, primary cytoreductive surgery.

**Effectiveness of Neoadjuvant Chemotherapy in Ovarian Cancer**

**Table A2.** Patient Characteristics Within Propensity-Score Matched Samples

Characteristic	Stage IIIc		Stage IV	
	NACT (n =174)	PCS (n = 174)	NACT (n = 123)	PCS (n = 123)
Age at diagnosis (years)				
18-54	30 (17)	32 (18)	25 (20)	27 (22)
55-64	44 (25)	52 (30)	38 (31)	41 (33)
65-74	61 (35)	60 (34)	42 (34)	42 (34)
> 74	39 (22)	30 (17)	18 (15)	13 (11)
Race				
White	157 (90)	160 (92)	111 (90)	113 (92)
Nonwhite	17 (10)	14 (8)	12 (10)	10 (8)
Ethnicity				
Non-Hispanic	162 (93)	163 (94)	116 (94)	116 (94)
Hispanic	12 (7)	11 (6)	7 (6)	7 (6)
Pretreatment BMI				
< 18.5	4 (2)	4 (2)		
18.5-25	59 (34)	66 (38)	35 (28)	39 (32)
> 25-30	54 (31)	46 (26)	37 (30)	30 (24)
> 30	46 (26)	41 (24)	36 (29)	40 (33)
Unknown	11 (6)	17 (10)	15 (12)	14 (11)
Insurance				
Commercial	61 (35)	58 (33)	53 (43)	58 (47)
Medicare	102 (59)	101 (58)	63 (51)	54 (44)
Medicaid	7 (4)	10 (6)	5 (4)	8 (7)
Other	4 (2)	5 (3)	2 (2)	3 (2)
Income				
1 (lowest)	53 (30)	58 (33)	26 (21)	23 (19)
2	38 (22)	43 (25)	27 (22)	31 (25)
3	45 (26)	45 (26)	36 (29)	34 (28)
4 (highest)	38 (22)	28 (16)	34 (28)	35 (28)
GOG PS				
0	107 (61)	115 (66)	74 (60)	73 (59)
1-2	44 (25)	41 (24)	30 (24)	30 (24)
Unknown	23 (13)	18 (10)	19 (15)	20 (16)
Charlson comorbidity score				
0	128 (74)	128 (74)	96 (78)	95 (77)
1	36 (21)	35 (20)	22 (18)	23 (19)
≥ 2	10 (6)	11 (6)	5 (4)	5 (4)
Primary site				
Ovarian	112 (64)	114 (66)	102 (83)	100 (81)
Fallopian	17 (10)	16 (9)	5 (4)	5 (4)
Peritoneal	45 (26)	44 (25)	16 (13)	18 (15)
Histology				
Serous	136 (78)	139 (80)	87 (71)	86 (70)
Nonserous	38 (22)	35 (20)	36 (29)	37 (30)
Grade				
I-II	38 (22)	45 (26)	24 (20)	26 (21)
III	136 (78)	129 (74)	99 (80)	97 (79)
CA-125 at baseline				
< 35	6 (3)	5 (3)	1 (1)	2 (2)
35-500	59 (34)	59 (34)	47 (38)	44 (36)
> 500-1,000	22 (13)	22 (13)	14 (11)	12 (10)
> 1,000	67 (39)	66 (38)	41 (33)	43 (35)
Unknown	20 (11)	22 (13)	20 (16)	22 (18)
Ascites at diagnosis				
Absent	89 (51)	89 (51)	71 (58)	67 (54)
Present	85 (49)	85 (49)	52 (42)	56 (46)
Institution*				
1	—	—	—	—
2	—	—	—	—
3	—	—	—	—
4	—	—	—	—
5	—	—	—	—
6	—	—	—	—

(continued on following page)

**Table A2.** Patient Characteristics Within Propensity-Score Matched Samples (continued)

Characteristic	Stage IIIC		Stage IV	
	NACT (n = 174)	PCS (n = 174)	NACT (n = 123)	PCS (n = 123)
Year of diagnosis				
2003-2004	19 (11)	24 (14)	18 (15)	20 (16)
2005-2006	24 (14)	25 (14)	19 (15)	21 (17)
2007-2008	32 (18)	31 (18)	29 (24)	24 (20)
2009-2010	54 (31)	51 (29)	36 (29)	42 (34)
2011-2012	45 (26)	43 (25)	21 (17)	16 (13)

NOTE. Data are given as No. (%). Of patients, 174 (93%) of 188 with stage IIIC disease and 123 (67%) of 184 with stage IV disease and who received neoadjuvant chemotherapy were propensity-score matched to patients who received primary cytoreductive surgery.

Abbreviations: BMI, body mass index; CA-125, cancer antigen 125; GOG PS, Gynecologic Oncology Group performance status; NACT, neoadjuvant chemotherapy; PCS, primary cytoreductive surgery.

\*Institution-specific frequencies and percentages are suppressed to avoid identification of specific institutions.

**Table A3.** Standardized Difference in Observed Covariates Before and After Propensity-Score Matching

Variable	Standardized Difference (%)			
	Stage IIIC		Stage IV	
	Before Propensity-Score Matching	After Propensity-Score Matching (174 matched pairs)	Before Propensity-Score Matching	After Propensity-Score Matching (123 matched pairs)
Age at diagnosis	22.6	4.1	14.9	2.4
Race	1.9	6.1	14.5	5.7
Ethnicity	7.3	2.3	0.3	0.0
Pretreatment BMI	12.0	5.9	14.1	4.4
Insurance	21.9	3.6	18.1	8.2
Income	2.8	4.1	23.8	1.6
GOG PS	11.2	8.2	19.7	0.2
Charlson comorbidity score	22.9	0.0	18.6	2.0
Primary site	177.1	0.6	59.5	5.5
Histology	8.5	4.2	35.1	1.8
Grade	16.6	9.5	36.8	4.0
CA-125 at baseline	11.7	0.2	26.4	1.1
Ascites at diagnosis	13.3	0.0	5.4	6.6
Institution	12.9	1.7	40.7	4.1
Year of diagnosis	66.9	1.3	62.3	5.3

NOTE. In general, variables with standardized differences <10% are considered to have negligible differences between treatment groups. Abbreviations: BMI, body mass index; CA-125, cancer antigen 125; GOG PS, Gynecologic Oncology Group performance status.

**Effectiveness of Neoadjuvant Chemotherapy in Ovarian Cancer**

**Table A4.** Sensitivity Analysis: HRs of NACT Versus PCS for Overall Survival, Adjusted for the Unobserved Confounder Variable of Disease Score

HR* for OS, High v Moderate and Low Disease Score	Prevalence of High Disease Score		Adjusted HR Accounting for Differences in Disease Score (95% CI)	
	NACT	PCS	Stage IIIC	Stage IV
1.56	0.65	0.60	1.37 (1.09 to 1.73)	1.14 (0.87 to 1.49)
	0.70	0.60	1.34 (1.07 to 1.70)	1.11 (0.85 to 1.46)
	0.75	0.60	1.32 (1.04 to 1.67)	1.09 (0.84 to 1.43)
	0.80	0.60	1.29 (1.02 to 1.63)	1.07 (0.82 to 1.40)
	0.85	0.60	1.27 (1.00 to 1.60)	1.05 (0.81 to 1.38)
	0.90	0.60	1.24 (0.99 to 1.57)	1.03 (0.79 to 1.35)
	0.95	0.60	1.22 (0.97 to 1.54)	1.01 (0.78 to 1.33)
1.56	0.60	0.55	1.37 (1.09 to 1.73)	1.14 (0.87 to 1.49)
	0.65	0.55	1.34 (1.06 to 1.70)	1.11 (0.85 to 1.46)
	0.70	0.55	1.32 (1.04 to 1.66)	1.09 (0.84 to 1.43)
	0.75	0.55	1.29 (1.02 to 1.63)	1.07 (0.82 to 1.40)
	0.80	0.55	1.26 (1.00 to 1.60)	1.05 (0.80 to 1.37)
	0.85	0.55	1.24 (0.98 to 1.57)	1.03 (0.79 to 1.35)
	0.90	0.55	1.22 (0.97 to 1.54)	1.01 (0.77 to 1.32)
1.56	0.55	0.50	1.20 (0.95 to 1.51)	0.99 (0.76 to 1.30)
	0.60	0.50	1.37 (1.09 to 1.73)	1.14 (0.87 to 1.49)
	0.65	0.50	1.34 (1.06 to 1.70)	1.11 (0.85 to 1.46)
	0.70	0.50	1.31 (1.04 to 1.66)	1.09 (0.84 to 1.43)
	0.75	0.50	1.29 (1.02 to 1.63)	1.07 (0.82 to 1.40)
	0.85	0.50	1.26 (1.00 to 1.60)	1.05 (0.80 to 1.37)
	0.95	0.50	1.21 (0.96 to 1.53)	1.01 (0.77 to 1.32)
1.56	0.50	0.45	1.17 (0.93 to 1.48)	0.97 (0.74 to 1.27)
	0.55	0.45	1.37 (1.09 to 1.73)	1.13 (0.87 to 1.49)
	0.60	0.45	1.34 (1.06 to 1.69)	1.11 (0.85 to 1.45)
	0.65	0.45	1.31 (1.04 to 1.66)	1.09 (0.83 to 1.42)
	0.70	0.45	1.29 (1.02 to 1.62)	1.06 (0.82 to 1.40)
	0.75	0.45	1.26 (1.00 to 1.59)	1.04 (0.80 to 1.37)
	0.85	0.45	1.23 (0.98 to 1.56)	1.02 (0.78 to 1.34)
0.95	0.45	1.19 (0.94 to 1.50)	0.98 (0.75 to 1.29)	
			1.14 (0.91 to 1.45)	0.95 (0.73 to 1.24)

NOTE. For stage IIIC, absolute differences in the prevalence of high disease score would need to exceed 30% between groups to nullify our finding that OS was significantly inferior for NACT versus PCS for patients with stage IIIC disease (shaded cells). For stage IV, no reasonable assumptions for differences in disease score by treatment group would alter our main finding that overall survival did not differ significantly between the two treatment groups.

Abbreviations: HR, hazard ratio; NACT, neoadjuvant chemotherapy; OS, overall survival; PCS, primary cytoreductive surgery.

\*From Horowitz et al,<sup>13</sup> among patients with cytoreduction to ≤ 1 cm, HR for OS between moderate versus high disease scores was 0.75 (95% CI, 0.64 to 0.88). Of note, two thirds of the patient cohort fell into this pairwise comparison, that is, 68% of patients had moderate or high disease scores, with cytoreduction to ≤ 1 cm, and the lower bound of this confidence interval was comparable to those reported for patients with cytoreduction to R0 as well as patients with low versus high disease scores. Therefore, we inverted the lower bound of the confidence interval (1/0.64 = 1.56) to characterize the HR for OS between high versus moderate and low disease scores.